

All Blues

C Part Bass Clef

By Miles Davis
Arr. McDonough

1 G7 Head

5

9 C7

13 G7

17 D7(#9) Eb7(#9) D7(#9)

21 G7

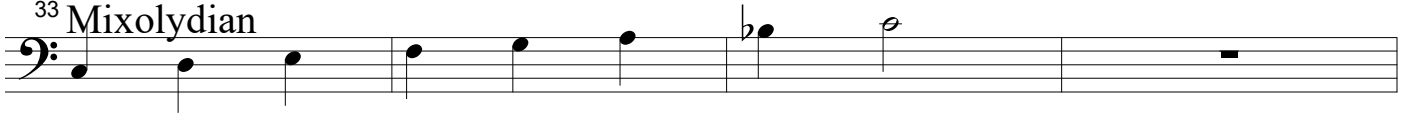
25 G7 Scales
Mixolydian

29



C7

33 Mixolydian



G7

37 Mixolydian



D7(#9)

41 Altered Mixolydian

E♭7(#9)

Altered Mixolydian

D7(#9)

Altered Mixolydian



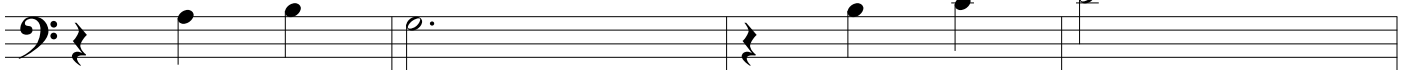
G7

45 Mixolydian



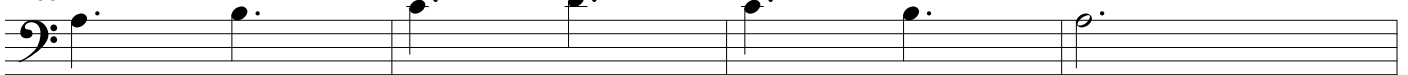
G7 Motifs Start after 1

49



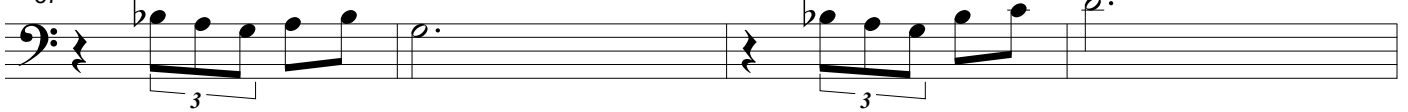
Displacement 2 over 3

53



C7 Triplets

57



G7 Displacement 4 over 3

61

A musical staff in bass clef showing a G7 chord with a 4-over-3 displacement. The notes are G2, B2, D3, and F3, with a dotted quarter note rhythm. The notes are placed on the 2nd, 4th, 5th, and 1st lines of the staff respectively.

64

D7(#9)
Rest

Less notes

E \flat 7(#9)

D7(#9)

G7
Quoting

A musical staff in bass clef for measure 64. It contains five measures with the following annotations: 1. A dotted quarter note on G2 with the annotation "D7(#9) Rest" above it. 2. A dotted quarter note on G2 with the annotation "Less notes" above it. 3. A dotted quarter note on E2 with the annotation "E \flat 7(#9)" above it. 4. A dotted quarter note on G2 with the annotation "D7(#9)" above it. 5. A dotted quarter note on G2 with the annotation "G7 Quoting" above it.

(Four by Miles Davis)

70

A musical staff in bass clef for measure 70. It contains three measures with the following notes: 1. A dotted quarter note on G2. 2. A dotted quarter note on B2. 3. A dotted quarter note on D3. 4. A dotted quarter note on F3. 5. A dotted quarter note on G2. 6. A dotted quarter note on G2.